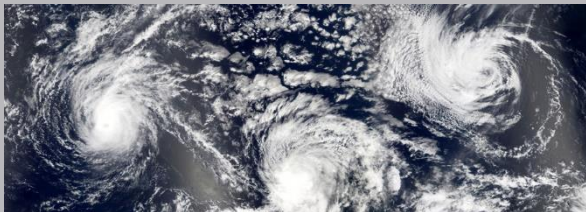


# Partnering for the New Style of IT

Pierre Tedesco  
HP France



# Des phénomènes structurants convergent



Besoins des métiers



Cloud

**25-30%**  
des livraisons de  
serveurs  
dans les data centers  
des Cloud  
service providers'  
en 2014 (1)



Big Data

**85%**  
des Fortune 500  
ne pourront pas exploiter  
l'avantage compétitif du  
Big Data for en 2015 (2)



Mobilité

**45%**  
des organisations  
dépendront au moins  
500K\$  
pour la mobilité dans  
les prochains 12 à 18  
mois (3)



Securité

**5.5M \$**  
coût moyen d'une  
attaque, les entreprises  
subissent plus d'une  
attaque réussie par  
semaine en moyenne (4)

1 March 2013 Forbes

2 "Big Data Business Benefits Are Hampered by 'Culture Clash,'" Gartner, 12 September 2013.

3 CIO Insights - Enterprise Mobility Dominates IT Agenda in 2014

4 2013 Cost of Data Breach Study: Global Analysis Ponemon Institute

# Hewlett-Packard Enterprise : des solutions pour le “New Style of IT”

**Infrastructures**  
fondations du New  
Style of IT



**Services**  
gérer et transformer  
du traditionnel vers le  
new



**Software**  
fournir la connaissance



**Cloud**  
Produire le New Style  
of IT pour l'entreprise



Faire croître le business des clients avec des solutions pérennes et innovantes qui transforment les infrastructures traditionnelles

# Accélération de l'innovation FY13/14~



CI for SMB  
MicroServer



ProLiant Gen8  
Refresh



ProLiant  
Bladestem  
Gen8 Refresh



Moonshot



SL4500  
Density Optimized  
Compute & Storage



EMEA  
ECOPODS



C7000  
Blade Platinum  
Enclosure



High Performance  
Component-level  
Cooling Apollo



HP 6125XLG  
10/40Gb Switch



Virtual  
Connect 4.01



2920 switch



HP 11900  
switch



HP 12900  
switch



vSwitch



OpenFlow



Datacenter  
Care



Flexible  
Capacity



Proactive  
Care



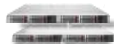
CloudOS



Next-Generation  
CloudSystem



SL6500  
Dense, shared  
serviceable,  
infrastructure



SL2500  
Dense Multinode



SmartCache



Next Gen Smart Array  
HP Secure Encryption &  
12G SAS Capable



HP MSA  
Storage



Fusion 1.0 Blade &  
Rack Virtual  
Connect



Next Gen Smart  
Update



HP  
ConvergedSystem 100  
for Hosted Desktops



HP  
ConvergedSystem  
300  
for Virtualization



HP StoreOnce  
Backup



HP StoreVirtual  
Storage



HP StoreAll  
Archive



HP 3PAR StoreServ  
Storage



Enterprise  
Wireless  
Controller



Enterprise  
Controller



HP OneView



HP ConvergedSystem  
for SAP HANA Gen 1.2



HP ConvergedSystem  
700  
for Virtualization

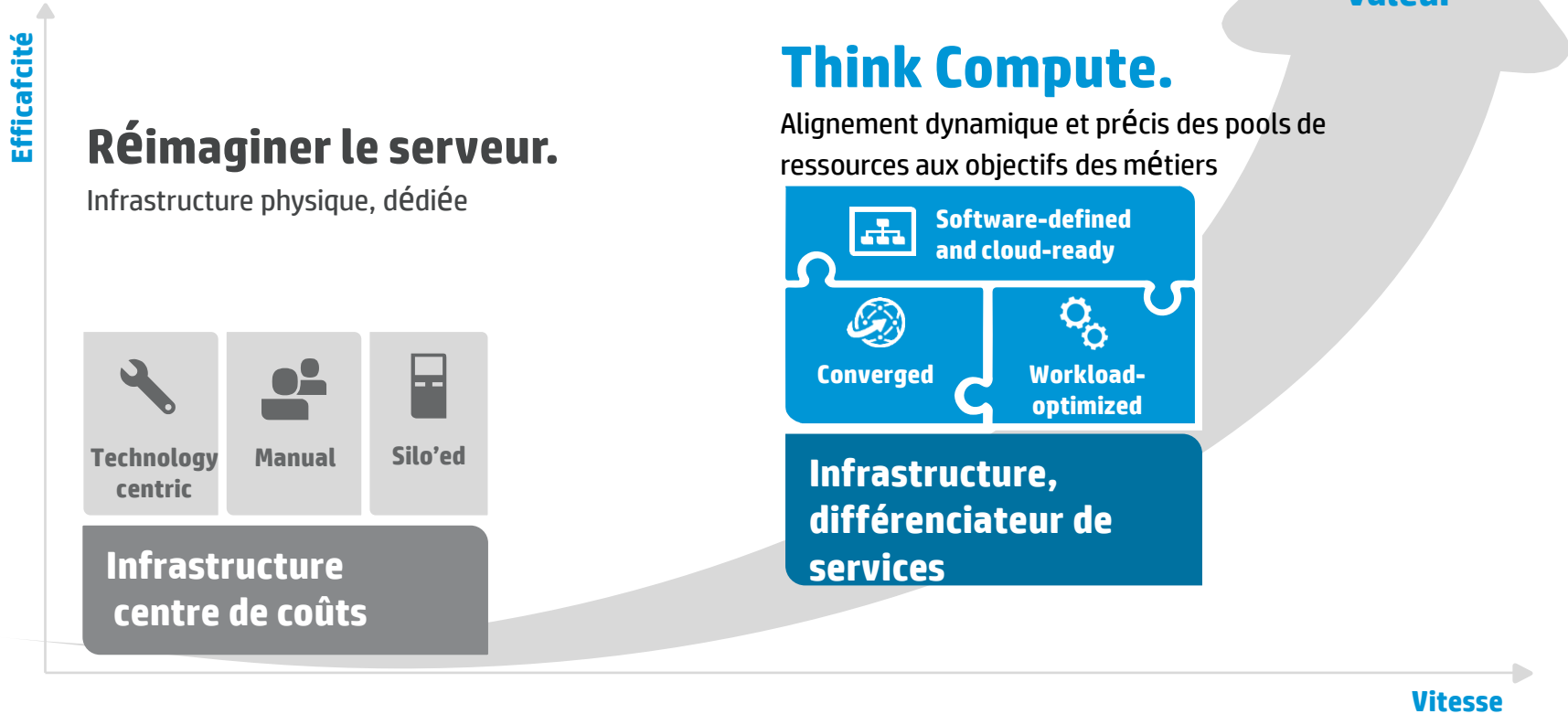


HP ConvergedSystem  
300  
for Vertica

... et ce n'est que le début



# La nouvelle génération de serveurs optimise la fourniture des services IT



# Une offre centrée sur les besoins des entreprises

## Software-defined and cloud-ready



HP OneView



HP Helion



OpenStack



RESTful APIs

## Workload-optimized

### For core business applications



HP MicroServer



HP ProLiant ML



HP ProLiant DL

#### Intelligence

to increase productivity

### For mission-critical environments



HP ProLiant scale-up



"DragonHawk" HP Integrity blades & Superdome



HP Integrity blades & Superdome



HP Integrity NonStop

#### Availability

for continuous business

### For Big Data, HPC, & web scalability



HP ProLiant SL



HP Moonshot



HP Apollo Family

#### Density and efficiency

to scale rapidly

### For virtualized & cloud workloads



HP BladeSystem

#### Convergence

to accelerate IT service delivery



## Converged

Converged network  
Virtual Connect

Converged management  
HP OneView

Converged storage  
HP StoreVirtual VSA

Common modular  
architecture

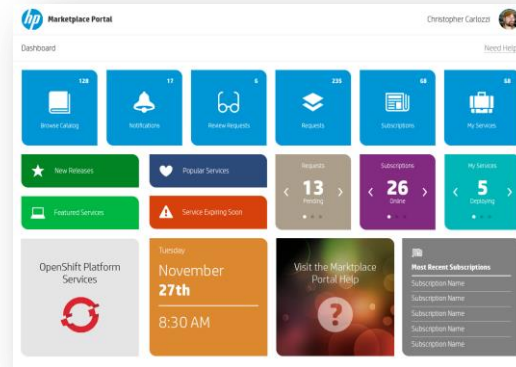
Global support and services | Best-in-class partnerships | ConvergedSystems





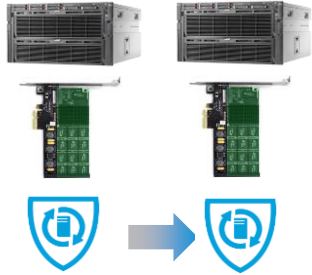
# HP Converged Infrastructure for The New Style of IT

Standardization, Industrialization, Innovation

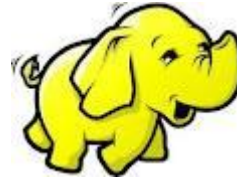


Frederic Leonetti  
HP France

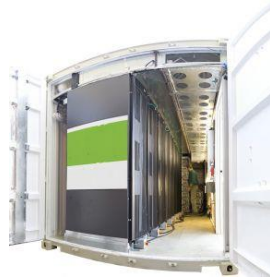
# Demanding Workloads In France on HP Converged Infrastructure technologies



**French Bank, Retail, Telco**  
**« Mission Critical x86 »**



**French « Gazelle »**  
**«Big Data with HP Hadoop architecture »**



**Large Industrial Company**

**« Enhancing capabilities with HPC »**



**French Insurance Company**  
**« Standardized and Industrialized Shared Services »**



**Large Telco Company**

**«Secured Public Cloud »**

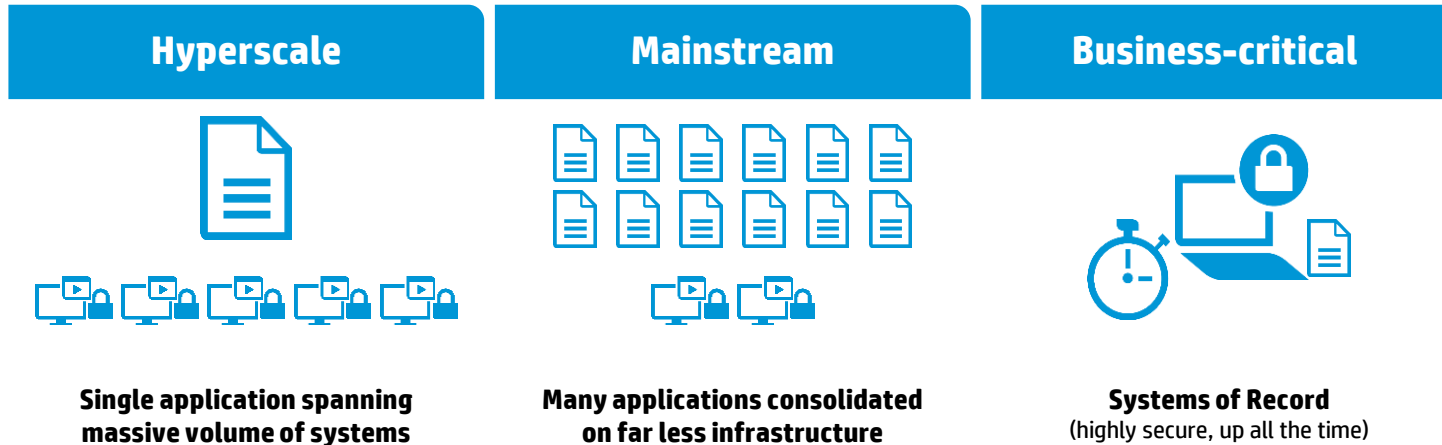




# The only approach designed for the new style of IT

Solutions engineered, built, and delivered across three workload **design centers**

## Application-centric approach

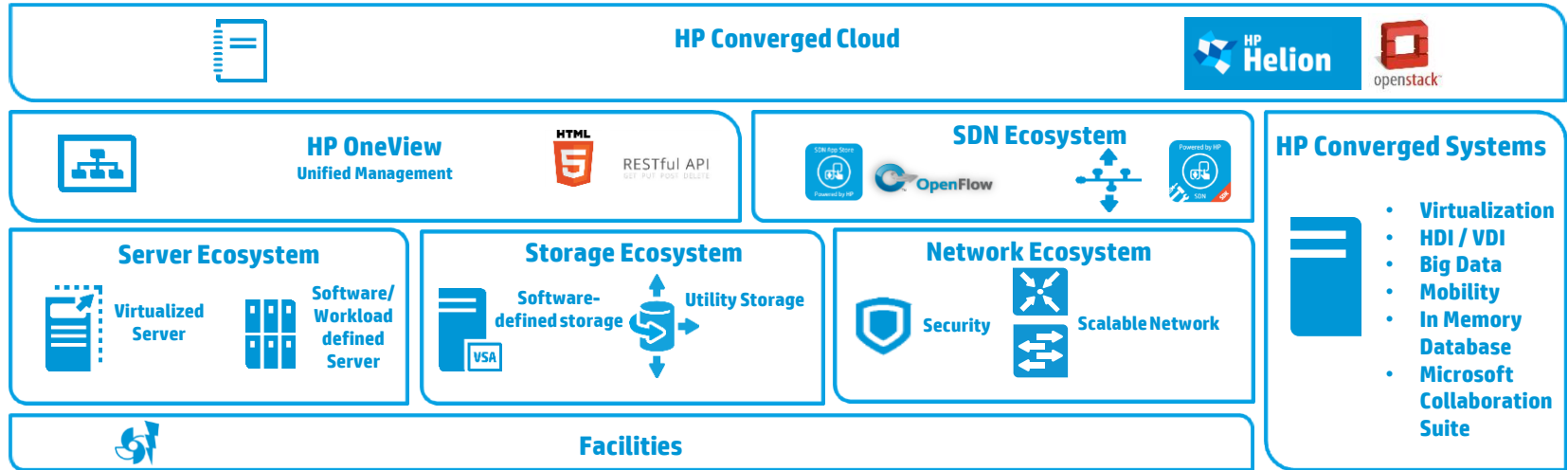


It's all about the **APP**

# SDDC / Software Defined Infrastructure Solutions



Application & Business requirements

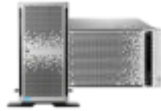


# Workload-optimized portfolio for better business outcomes

## For core business applications



HP MicroServer



HP ProLiant ML



HP ProLiant DL

**Intelligence** to increase productivity

## For mission-critical environments



HP ProLiant scale-up



"DragonHawk"



HP Integrity blades & Superdome



HP Integrity NonStop

**Availability** to function in real-time

## For Big Data, HPC, and web scalability



HP ProLiant SL




HP Moonshot



HP Apollo

**Density and efficiency** to scale rapidly

  
**Common modular compute architecture**

## For virtualized and cloud workloads



HP BladeSystem



HP OneView

**Convergence** to accelerate IT service delivery

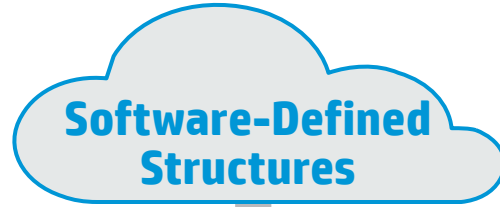
**Global support and services | Best-in-class partnerships | Converged solutions**



# Converged Infrastructure Management with HP OneView

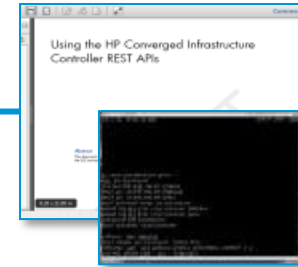
|                     |                   |                           |
|---------------------|-------------------|---------------------------|
| Boot Config         | Storage Volumes   | OS Build Plan             |
| Drivers             | vSwitch Setup     | ESX Host Config           |
| Identity            | Firmware          | NIC Teaming               |
| BIOS & iLO Settings | Local RAID Config | Network Edge Connectivity |

Cloud Virtualization



REST API & CLI

HTML5 User Interface

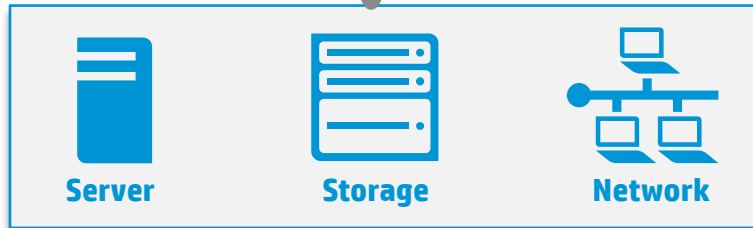


HP OneView Management Platform

**Appliance Options**  
Virtual Machine (OVF)  
-or-  
Physical Appliance

Physical Appliance

Ready-to-Run Appliance



# The New HP Apollo 8000 System

Advancing the science of supercomputing



## Scientific Computing

- Research computing
- Climate modeling
- Protein analysis

## Manufacturing

- Product modeling
- Simulations
- Material analysis

## Leading teraflops per rack for accelerated results

- **4X** teraflops/sq. ft. than air-cooled systems
- **> 250 teraflops/rack**

## Efficient liquid cooling without the risk

- **40% more FLOPS/watt** and **28% less** energy than air-cooled systems
- **Dry-disconnect** servers, intelligent Cooling Distribution Unit (iCDU) monitoring and isolation

## Redefining data center energy recycling

- Save up to **3,800 tons** of CO<sub>2</sub>/year (790 cars)
- **Recycle water** to heat facility

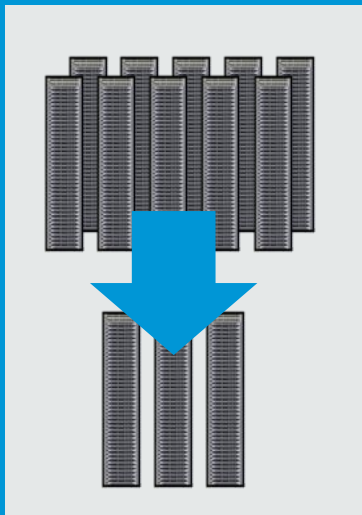
**4X** teraflops/sq. ft.

**40%** more FLOPS/watt

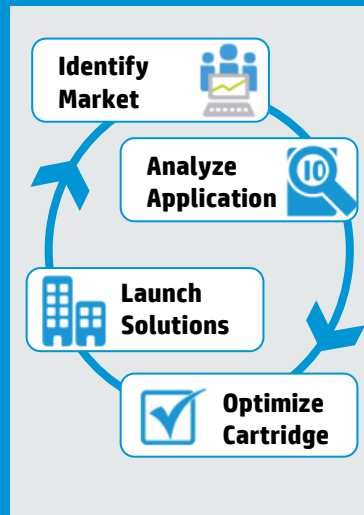
**3,800** tons of CO<sub>2</sub>

# HP SL1500 Moonshot for apps at scale

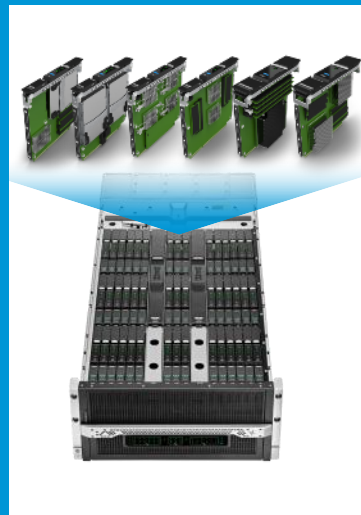
Revolutionary cost and power savings for targeted applications



New server development model and cadence



Large cartridge catalog – put the applications back in charge



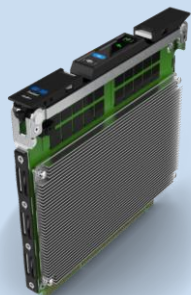
Pathfinder Innovation Ecosystem





# New Moonshot Cartridge As of 4QCY14

## HP ProLiant m710 Server Cartridge



|                    |  |
|--------------------|--|
| CPU                | <b>Xeon</b> E3-1284Lv3 4 core / 1.8 GHz (3.4GHz Turbo) with <b>Iris Pro GPU 5200+</b> 128MB <b>eDDR</b>  |
| MEMORY             | Total of <b>32GB</b> , dual-memory channels (4) DIMMs Total: 8GB/1600MHz, DDR3 SO-DIMMs with ECC protection  |
| NETWORK            | Onboard NIC: <b>Dual port 10GbE NIC per CPU Supported Switch(s): 45 port 10Gb Downlinks, (4) 40GbE QSFP uplinks</b>                                  |
| STORAGE            | Local M.2 120GB or 480GB m.2 (2280)  |
| OS                 | Ubuntu 12.04 w/KVM, RHEL 6.5,7.0 w/KVM, SLES 11 SP3 w/KISO/KVM, Windows Server 2012 R2, CentOS 6.5, 7.0<br>Intel Media SDK (media libraries, OpenCL) |
| Cible Applicative* | <b>Video transcoding, Application Delivery CPU and GPU Computing</b>   |

\*Non exhaustive

## HP ProLiant m400 Server Cartridge



|                    |   |
|--------------------|---|
| CPU                | APM STORM / <b>ARM 64bit v8 8 cores, 2.4GHz</b>   |
| MEMORY             | <b>(8) DIMMS Total – Max of 64GB</b><br>Up to 1600MHz, DDR3 UDIMM SO-DIMM ECC (8GB each)                            |
| NETWORK            | Onboard NIC: <b>Dual port 10GbE NIC per CPU Supported Switch(s): 45 port 10Gb Downlinks, (4) 40GbE QSFP uplinks</b> |
| STORAGE            | Local M.2 120GB or 480GB m.2 (2280)   |
| OS                 | Ubuntu  |
| Cible Applicative* | <b>Web Caching, ARM Development Platform</b>  |

## HP ProLiant m350 Server Cartridge



|                    |   |
|--------------------|---|
| CPU                | Intel Atom C2730 / 8 core / 1.7GHz / 4MB L2 / 20W   |
| MEMORY             | 8GB 1333MHz ECC memory per SoC (4) SO-DIMMS   |
| NETWORK            | Integrated NIC: dual 1GbE oer SoC Supported Switch(s): 180 1GbE Downlinks, (4) 40G QSFP Uplinks |
| STORAGE            | 32GB / 64 GB local SSD  |
| OS                 | Ubuntu 12.04, RHEL 6.4, SLES 11 SP2, Windows2012  |
| Cible Applicative* | <b>Dynamic Web, Front et Back Office</b>  |

# 3PAR StoreServ Designed For The New Style Of IT

## ONE Architecture

- Midrange. Flash. High-end
- Common Tier-1 Feature Set
- Interoperability end-to-end

When scale matters

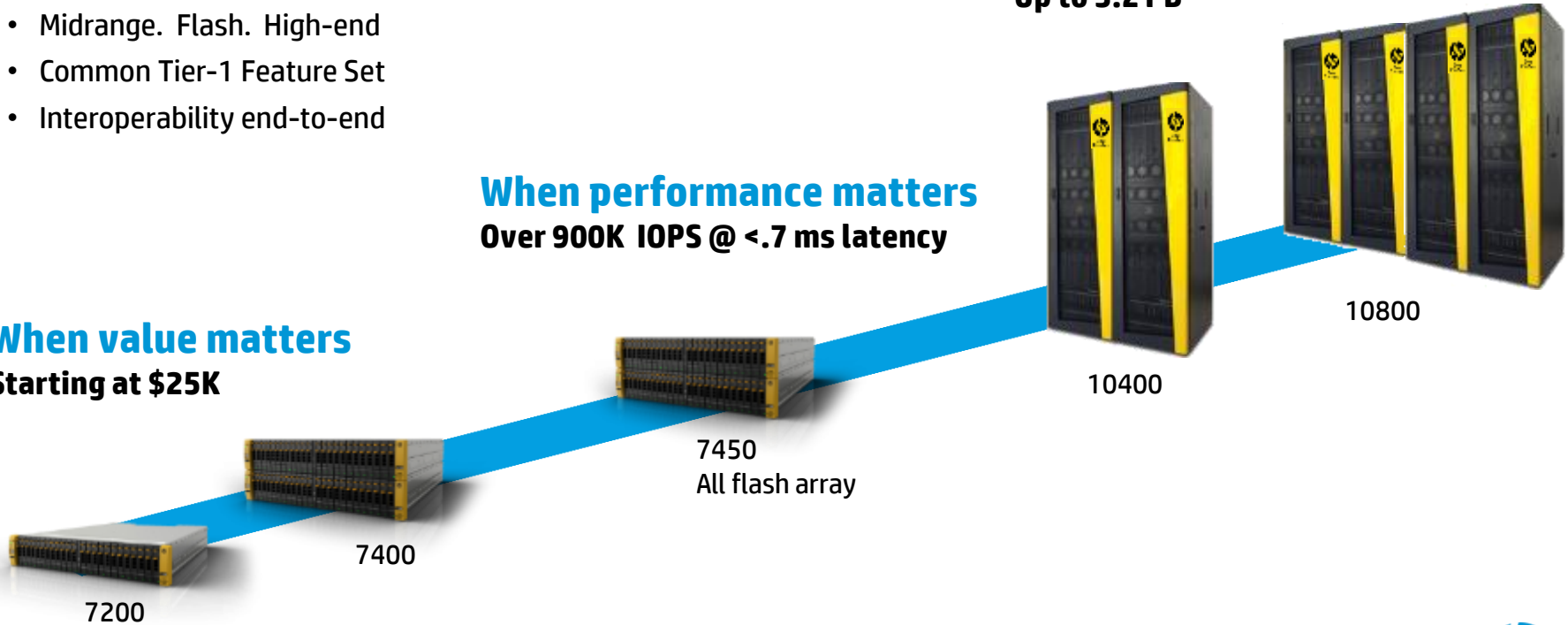
Up to 3.2 PB

When performance matters

Over 900K IOPS @ <.7 ms latency

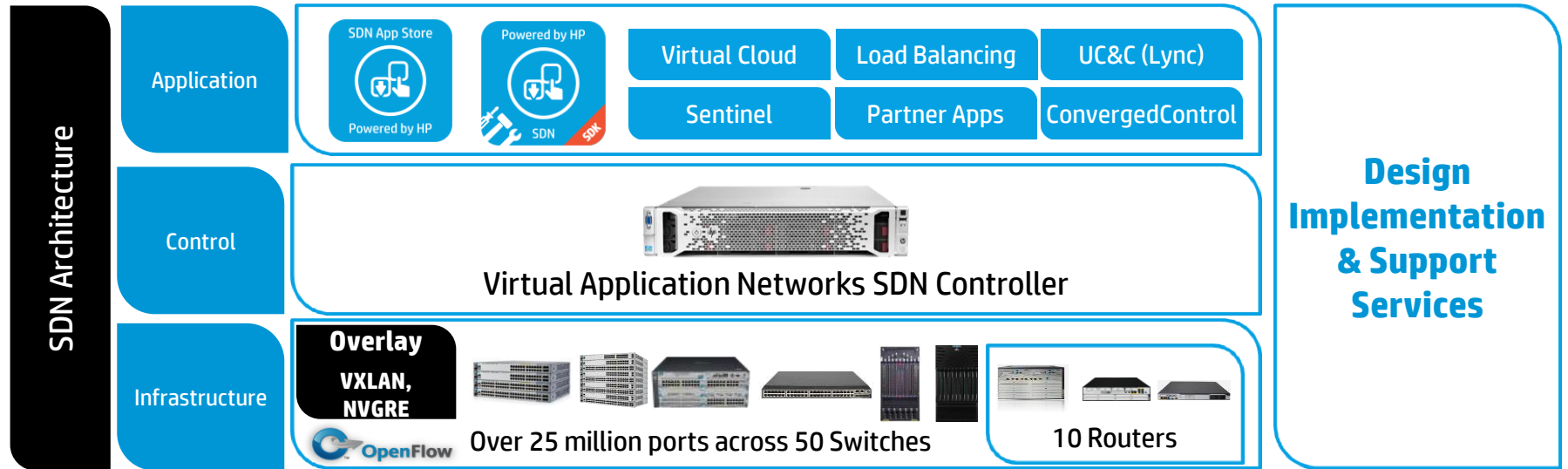
When value matters

Starting at \$25K



# Open SDN portfolio, SDK, App Store enable Ecosystem

Programmable network aligned to business application delivers agility



# HP Labs “The Machine”

Electrons compute, photons communicate, ions store ... at net-zero energy

**T0** massive,  
universal  
main memory

**T0** energy- and  
algorithm-optimized  
SoC ecosystems



**T0** integrated  
photonics



**T0** OpenSource data  
management platform



# EMEA/France Executive Briefing, Innovation and Solution Discovery Centers

*HP Les Ulis, France*

---



*Microsoft MTC/HP, Issy, France*

---



*Solution Innovation Center, Grenoble, France*

---



*Solution Technology Centre, Boeblingen, Germany*

---



# HP HAVEN

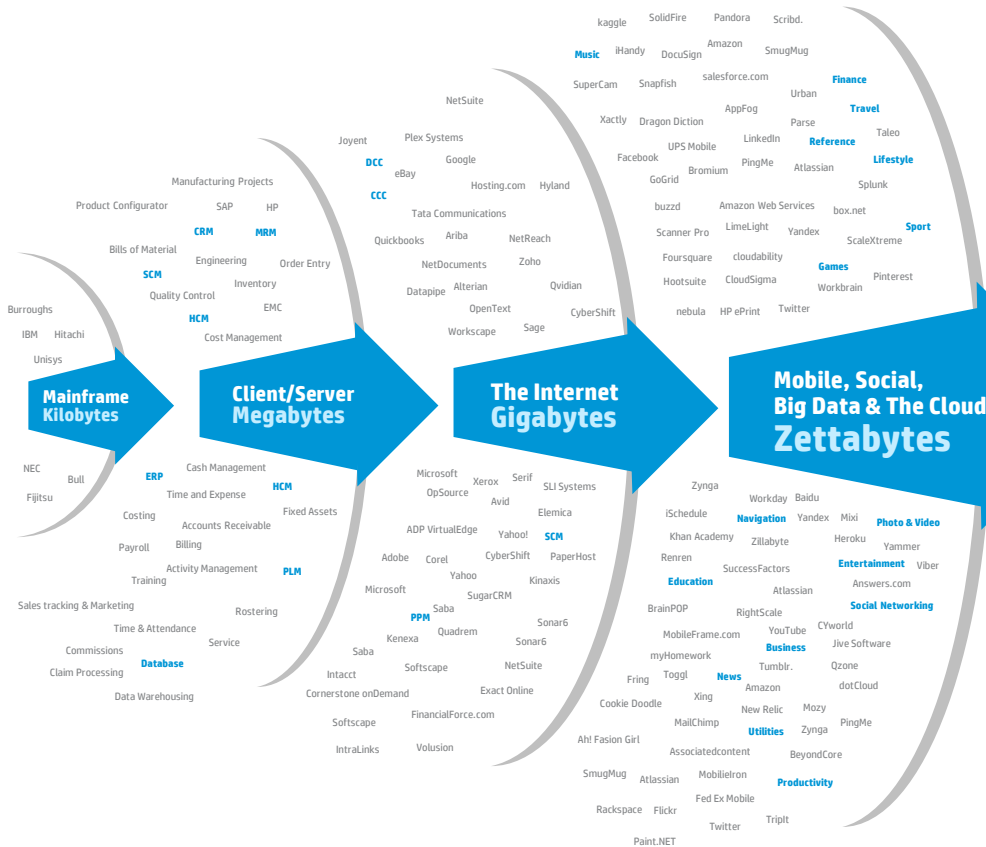
See the big picture  
in Big Data

Florence Laget  
HP France





# Accelerating innovation & time to value



## Every 60 seconds



**98,000+** tweets



**695,000** status updates



**11 million** instant messages



**698,445** Google searches



**168 million+** emails sent



**1,820TB** of data created



**217** new mobile web users

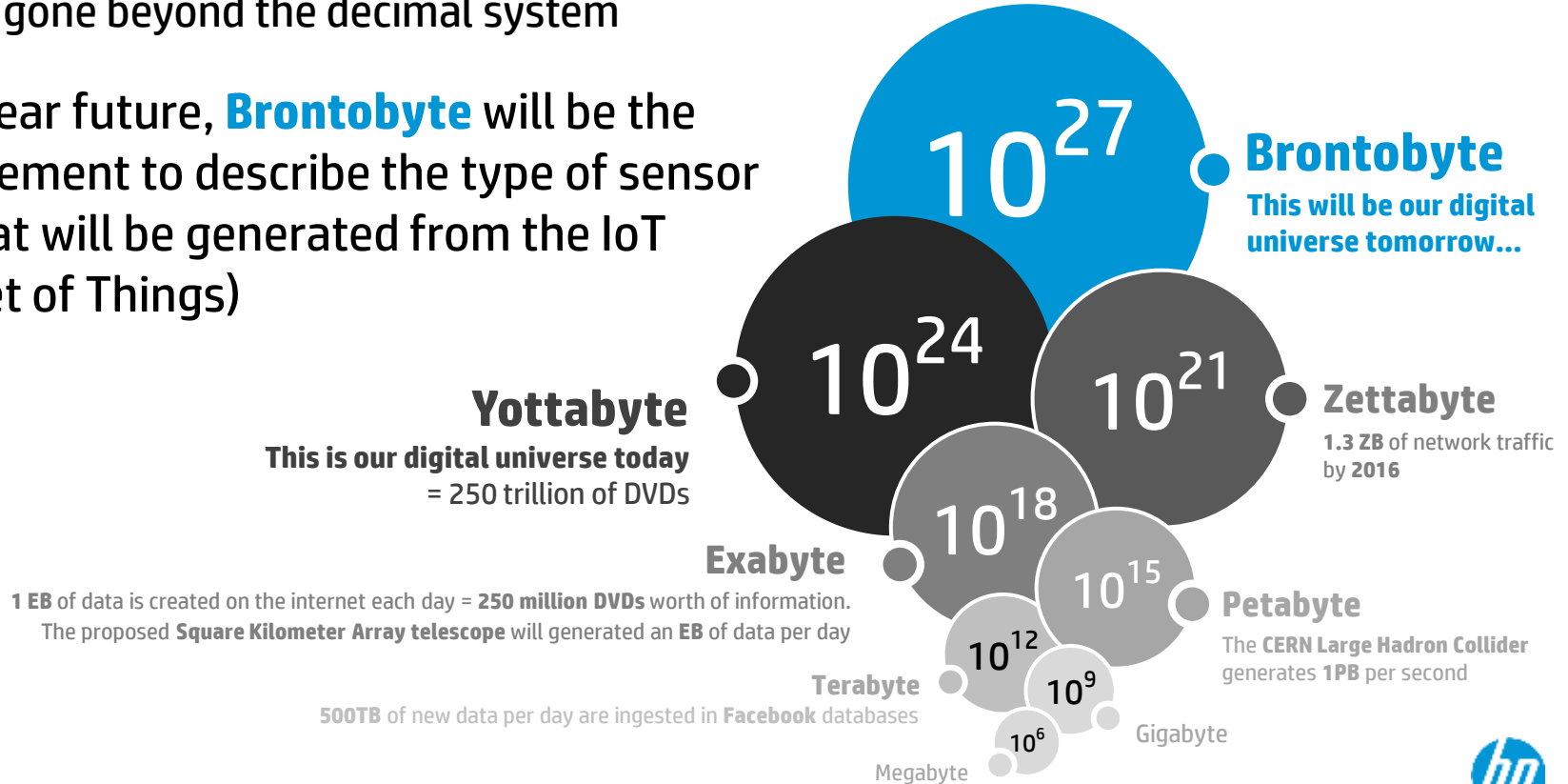
## Yottabytes



# Information from the Internet of things:

We have gone beyond the decimal system

In the near future, **Brontobyte** will be the measurement to describe the type of sensor data that will be generated from the IoT (Internet of Things)



# Big Data landscape

Annual Growth  
~100%

## Machine Data

Sensors;  
Web logs;  
App logs;  
event monitors;  
security and intelligence systems.

← 90% of Information →

## Human Information

email,  
social media,  
documents and records,  
video, audio, and images

## Business Data

ERP; CRM; EDW

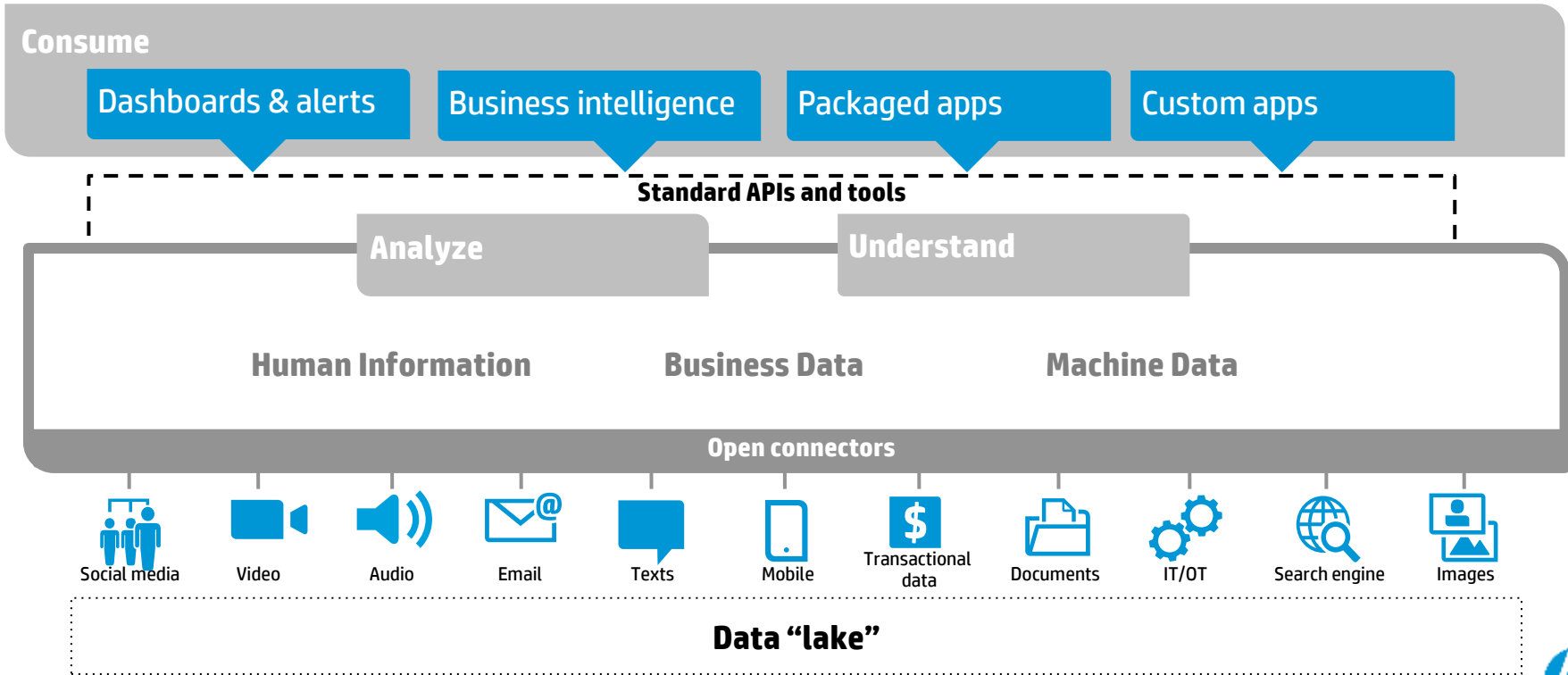
10% of Information

~10%



# Imagine if you could...

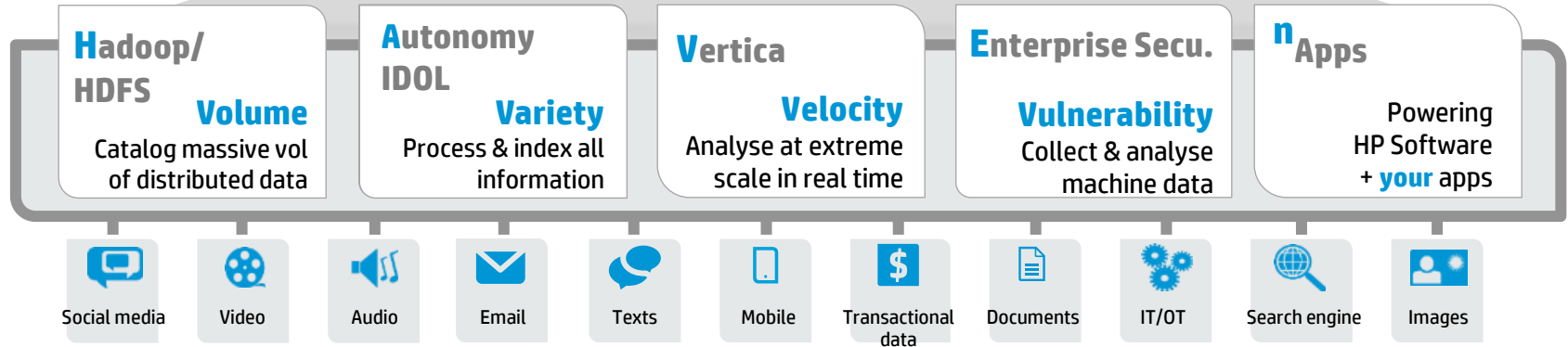
Interact with and process 100% of your data seamlessly



# Sales Play **BIG DATA**

## HP **HAVE**n platform

Exploit 100% of your data



[hp.com/haven](http://hp.com/haven)



# Better Products : NASCAR

**Understands sentiment**, identifies **emerging issues**, and **uncovers trends** that help the NASCAR team share and **enrich the fan and broadcast experience**

“... takes fan data, collects, it stores, and stitches it together...that **helps us understand what is being talked about** across the ecosystem of the sport.”

Steve Phelps, Senior VP and CMO, NASCAR



# Cardlytics



## Consumer analytics in the financial services industry

### Challenge

- Migrate to a new, scalable analytics platform to accommodate a data-intensive company undergoing rapid growth

### Solution

- HP Vertica Analytics Platform

### Result

- Capacity to quadruple the amount of data records added on a weekly basis – from 200 million to 800 million per week
- Typical queries reduced from up to 40 minutes to only one-half or one minute on average, up to 40-to-80X faster
- 100% reliable/stable – eliminated weekly back-ups and maintenance indexing, reducing operational support time by 90%
- Increased avg. customer pipeline 10x: 200 new merchant prospects on a weekly basis, up from 20 per week on legacy platform, with additional scalability



# Accelerating New Drug Discovery

Novartis Institute for Biomedical Research (NIBR)



## Challenge at Novartis

- 1,000s of scientists perform analysis on tissue sample data for new drug research
- Queries with existing database taking four to five hours to complete
- Concurrency issues with existing system prevented many scientists from performing analyses
- Hardware and licensing costs with existing DB vendor prohibitive and restrictive

## HP Vertica Solution

- Queries run in under five minutes; 48x – 60x faster
- Speed and concurrency allow more NIBR scientists to run tests = more drug discovery
- Use of commodity hardware cut operational costs by 30%
- Currently 20 TB of data in 37 billion row comprising 60,000 samples and 6 million measurements under HP Vertica management
- Plan to add at least 10 TB of additional capacity soon



# Disease Prediction Model

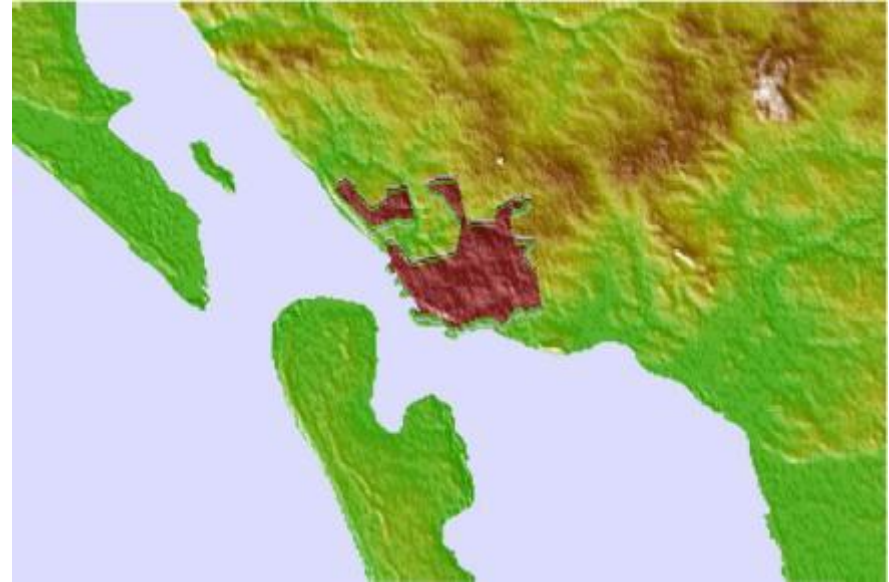
Based on Infection and Weather Data

## Data Sources:

- Weather data: Temperature, humidity, precipitation and dew point, time periods.  
Terrain data: Water, surface, altitude, sloping
- Disease: Location, type, crop, date and time.

## Model Considers:

- Host Susceptibility
- Disease properties: Disease cycle, means and speed of spread, regions affected.
- Spreading factors: Wind, water, insects, terrain
- Seasonal effects: Crop and disease cycles, weather conditions.



*Illustrative images*

# Farming industry, Chemical Products

Pattern Matching example

**Automated picture based disease recognition**

**Combine with weather forecast**

Factors: Disease, location, time

Accuracy: Field

**External users**

Farmers

Distributors

**Internal users**

Sales and Marketing

R&D

**No disease**

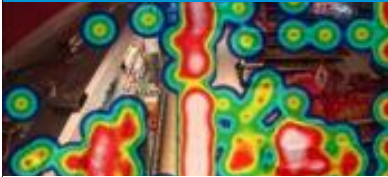


**Disease**



# Video Surveillance for the City – Use Cases

## Retail



Optimize retail store performance by analyzing traffic flow based on in-store display and promotions

- People identification
- People counting
- Heat maps
- Demographic analytics
- Unusual movement
- Over-crowding
- Secure zone breaches
- Unattended packages

## Law Enforcement



Analyze video and audio feeds from across the city and in social media for security events.

- Fixed camera number plate recognition
- Mobile number plate recognition
- Stolen vehicle identification
- Face recognition at entry of public buildings
- Public building perimeter security
- Graffiti alerts

## Traffic Management



ID offenses and automatically detect offending vehicles .

- Illegal overtaking
- Speeding
- Cars/Bikes jumping red lights
- Traffic Jam detection
- Traffic analysis – Car/Bike counting
- Vehicle parking enforcement

## Rail Systems



Detect wig-wag lights on rail crossing and identify violating cars and their numbers

- Rail-road crossing protection
- People crossing tracks
- Ticket Violations - People jumping fences or ticket barriers
- Perimeter intrusion
- People going off the end of a platform
- Tail-gating



# London Metropolitan Police



## Security analytics in the public sector

### Challenge

- Increase the level of community engagement
- Eliminate gaps in police intelligence
- Utilize social media channels to enhance business and operational outcomes

### Solution

- HP IDOL, HP Explore, HP Social Awareness Dashboard

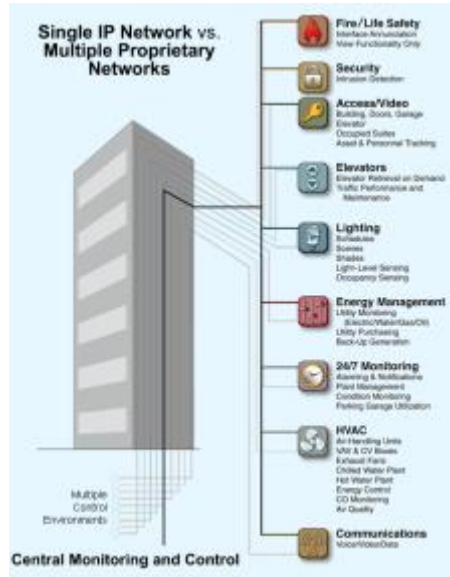
### Result

- Automatic analysis of large volumes of data, highlight 'known unknowns', resolve and address the 'needle in a haystack' problem space
- Identify witnesses and quickly spread news updates on incidents
- Faster analysis of social media trends saves time and money, improves allocation of appropriate resources
- Ensures joined-up intelligence on search criteria / topics across London



# The Internet of Things

## Smart buildings



## Infrastructure management



## And many, many more possibilities

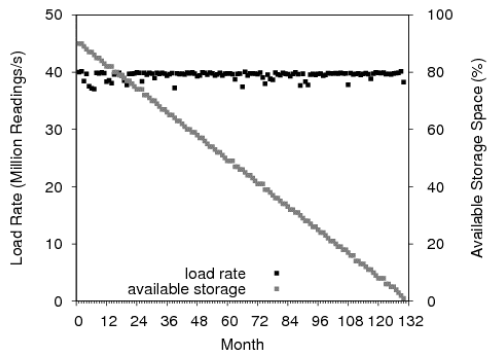


# Use case: Smart metering for a large utility

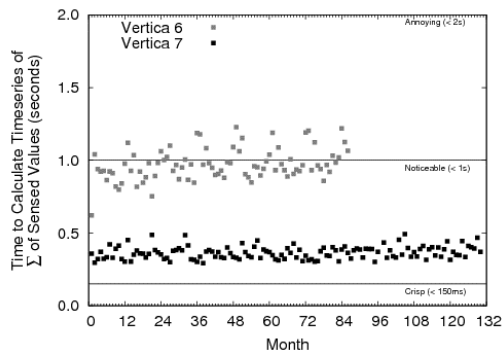
**Objective:** quantify the performance of HP Vertica as a sensor data analytics platform under realistic conditions

| Study parameters                                 |                       | HP Vertica 6.1.2 | HP Vertica 7.0.0   |
|--|-----------------------|------------------|--------------------|
| 40 million sensors                               | Total sensor readings | 15.1 trillion    | 22.8 trillion      |
| -each records a reading every 10 minutes         | Data duration         | 7 years 2 months | 10 years 10 months |
| 8-node (HP ProLiant DL380p gen8) Vertica cluster | Raw data size         | 0.478 PB         | 0.726 PB           |

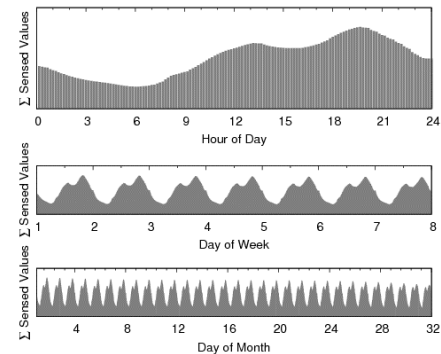
## Loading data



## Analyzing data



## Visualizing analysis results





# Big Data for Smart Energy

Leader in smart metering



Collect and manage meter data  
130 Millions smart meters  
8 000 customers over 100 countries  
1.9 B\$ in 2013  
75 locations in 35 countries  
Managed services for smart metering

Itron analytics is an analytics platform for Utilities  
Visualization and reporting tools included  
Real time, analytics  
Statistical and predictive analytics:  
Energy Forecasting (PV, DG)  
Asset overloading and failures  
Impedance estimations, voltage pattern matching



# Machine Data for Warranty Impact

HP IT



## Challenge at HP IT

- Current data warehouses could not provide iterative or predictive analytics in a timely, cost-effective manner
- HP Gen8 servers call-out feature provide telemetry data 24x7, generating massive amounts of data
- HP would like to be proactive about notifying server customers before a warranty event, increasing satisfaction and reducing support costs

## HP Vertica Solution

- Speed and compression allow HP to load and query on the massive amounts of telemetry data provided by Gen8 servers
- Discovered a memory change followed quickly by a processor change leads to a warranty event 24.5% of the time – HP was proactive with customers to fix issues before problems
- Determined for every 1% improvement in quality for their servers provides millions in potential benefit for HP



# Big Data – Center of Excellence



## Use-cases available for demo

- Use-cases addressing: **HAVEn, Vertica, Autonomy, Hadoop, SAS Visual Analytics**
- Local or Remote
- On-line Registration
- Presenters trained on the demo or Big data COE presenters



## Workshop

- On-site 1-2 day event
- Build agenda with account team
- Big Data presentations from CxO to tech people
- Discuss technical details of HP capability



## Proof of Concept

- Functional to Performance testing
- Help the customer to refine their requirements
- Full access is given to customers on all/part of the Big Data solution environment



# HP Big Data customers Reference





# Mobilité



Frédéric Fourdrinier  
HP France

## A huge IT infrastructure ...

  
**63PB**


of storage deployed on  
3Par, XP and EVA

**Millions**

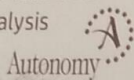
of lines of code scanned  
by



  
**41K+**  
servers

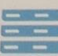
 **300M hits**  
per day on HP.com

Optimized partner  
program with real-time  
sentiment analysis



  
**1,500+**  
enterprise  
HPN routers

  
Manage  
**150K+**  
mobile devices

  
**15K+**  
HPN switches

100101011101011100101011  
001101010111001010110011  
100110101011100101101011  
101100110101011100101011

**4PB data**  
replicated per day

  
An HP Company

Analyze data from  
**100s of millions**  
of active devices

 **5B** security  
events logged per  
day with  
ArcSight



Prevented millions of  
denial of service  
attacks with

TippingPoint

# Gartner Top 10 Strategic Technology Trends for 2014

- **Mobile Device Diversity and Management**
- **Mobile Apps and Applications**
- **The Internet of Everything**

• ..

• ..

- **The Era of Personal Cloud**

• ..

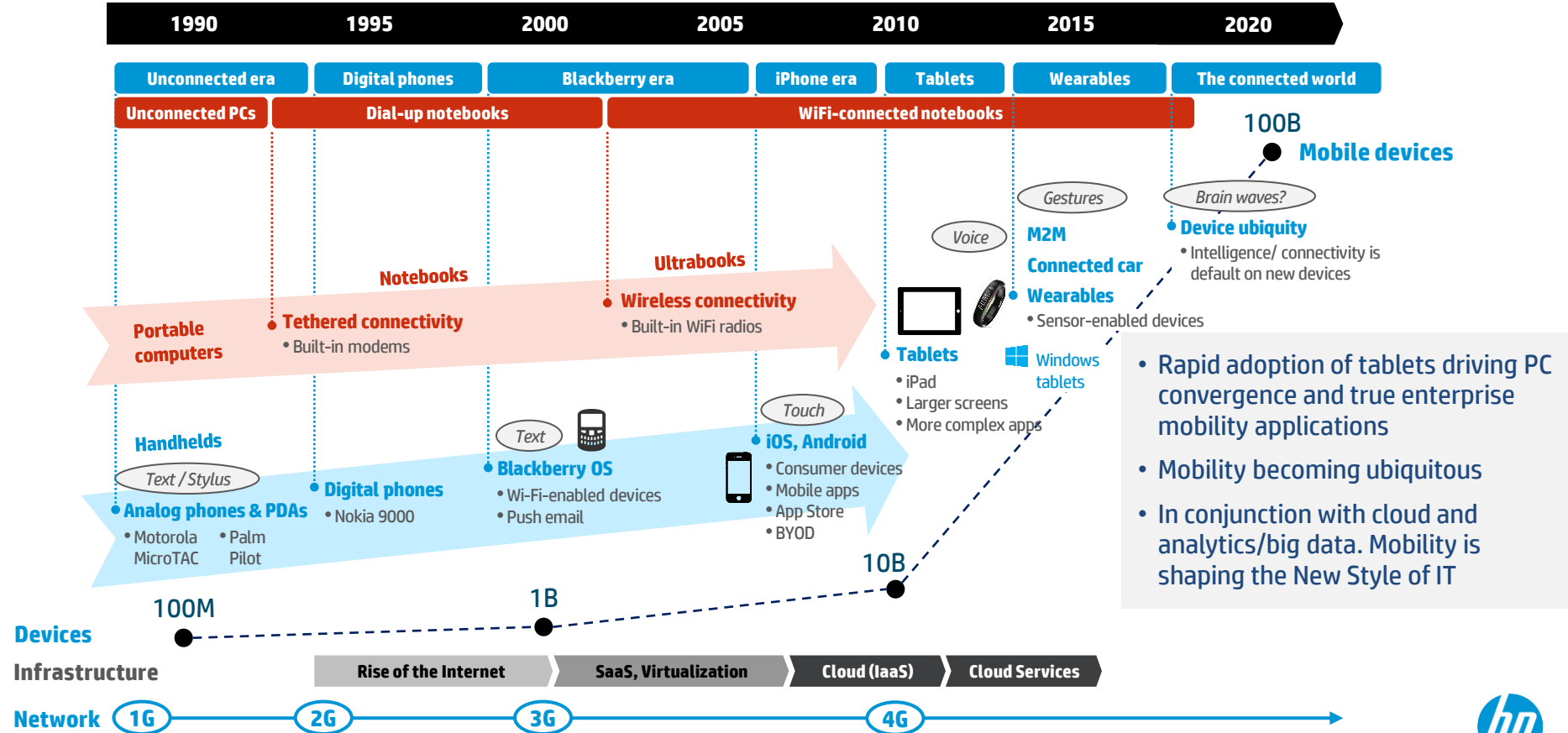
• ..

• ..

• ..



# Mobility Great Challenges





# HP mobility offering

## Personal Systems

HP ElitePad 1000  
HP EliteBook Folio 1040  
HP EliteBook Revolve  
HP Pro x2 612  
Business Laptops



## Networks

HP Unified Wired/Wireless Network  
HP Intelligent Management Center (IMC)  
HP IMC Unified Communications Health Manager  
HP WiFi Clear Connect  
HP FlexNetwork Architecture  
HP Network Protector - SDN  
HP Network Optimizer for MS Lync - SDN  
HP Mobile Printing

## Security

HP Fortify  
HP ArcSight  
HP TippingPoint



## Infrastructure

Moonshot HDI  
BladeSystem  
Graphic Server  
Storage

## Platform-as-a-Service

HP Anywhere Platform  
SAP Mobile Platform  
Kony One Platform  
Citrix Zenprise Platform

## Infrastructure-as-a-Service

HP Virtual Private Cloud  
HP Enterprise Cloud Services – Mobility



## Services

Mobile Consulting  
Mobile UX Design  
Mobile Apps Development  
Mobile Testing  
Mobile Integration  
Mobile Management  
Client Virtualization  
Mobility Transformation Experience Workshop

## Software

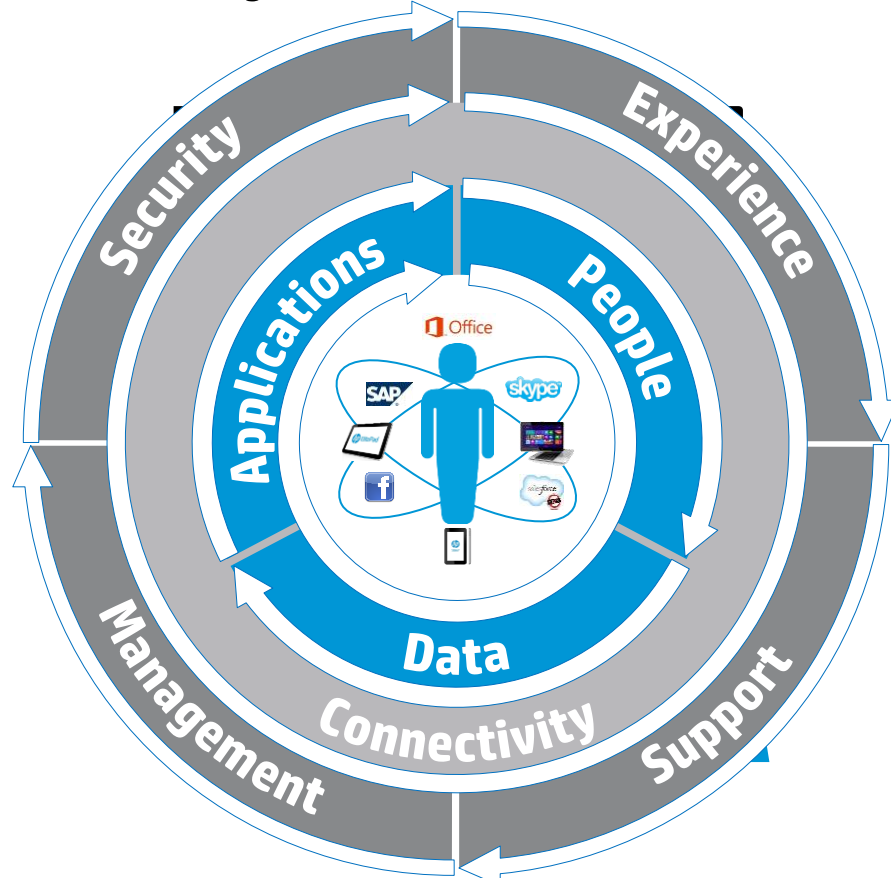
HP Aurasma  
HP Autonomy  
HP Anywhere  
HP Vertica  
HP Agile Manager  
HP ALM / Quality Center  
HP LoadRunner  
HP Business Service Management  
HP Fortify





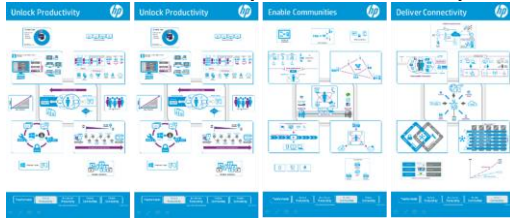
# HP enterprise mobility framework

The way forward

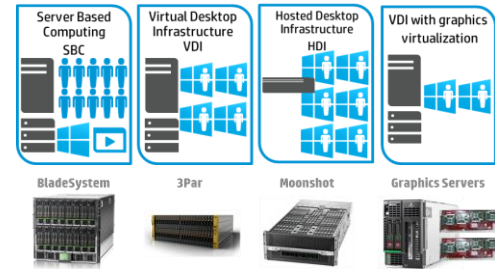


# HP Mobility Strategy

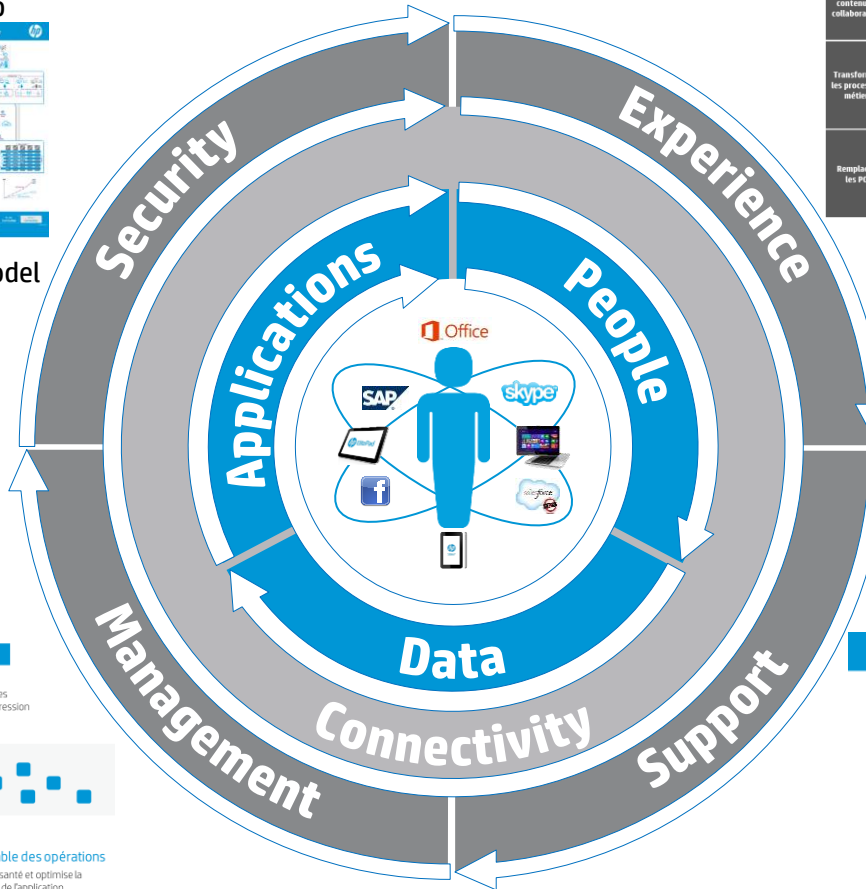
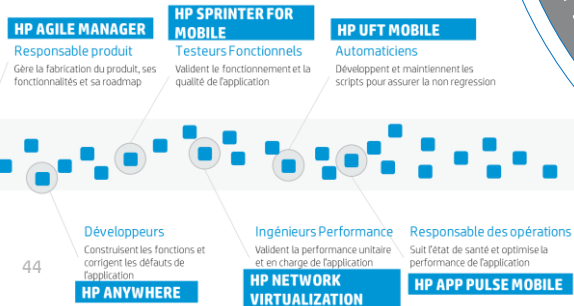
## Transformation Experience Workshop



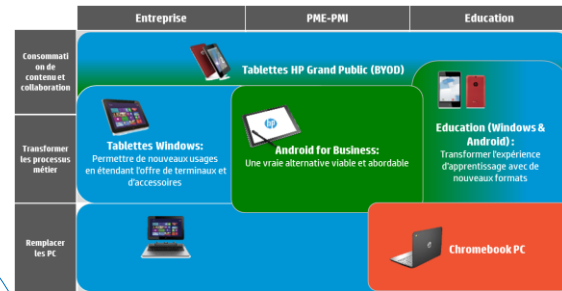
## Re-architect your dominant productivity model



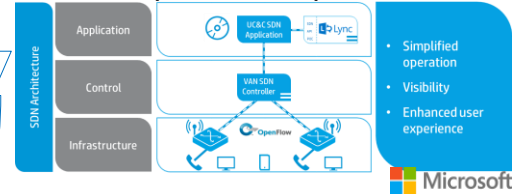
## Develop new mobile apps



## Device strategy

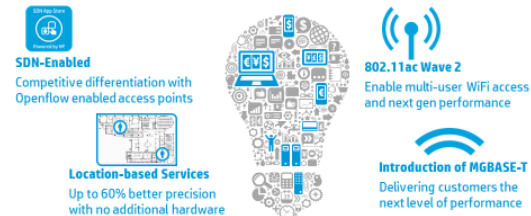


## Fuel mobility with UCC and superior user experience



## Connectivity strategy

### Aggressively bringing new products to market in FY15



... delivering on differentiation

# VERTICAL MOBILITY OPPORTUNITIES

What is driving the Mobility conversation in vertical markets?



## AIRLINES

- Optimize pilot efficiencies in the air and on the ground
- Modernise in-flight crew tasks
- Streamline communications with a dispersed workforce
- Maximize ancillary revenues – e.g. inflight shopping
- Delight customers
- Empower flight attendants with detailed passenger information
- Provide a modern inflight entertainment experience



## RETAIL

- Delight customers
- Arm sales associates with detailed product information
- Facilitate smooth cross-selling and upselling
- Empower associates to close sales efficiently
- Increase efficiencies
- Analyze customer buying patterns
- Communicate and collaborate internally in real-time
- Streamline stocking and ordering tasks



## RETAIL BANKING

- Strengthen customer relationships
- Arm sales associates with detailed product information and customer data
- Simplify account opening and maintenance processes
- Serve customers wherever they are
- Arm financial advisors with decision support
- Increase efficiencies
- Deliver a single view of enterprise risk
- Liberate staff from their desks



## HEALTHCARE

- Providing informed Medical decisions
- Delivering first class patient care and treatment
- Maintaining patient data integrity
- Leveraging Medical technology to deliver solutions and treatment across areas of healthcare delivery
- Reduce patient waiting times
- Communicate and collaborate in real time across all medical procedure operations – e.g. A&E to Outpatient



# AIRLINE MOBILITY

## ABOVE THE WING

### IN-FLIGHT ENTERTAINMENT (IFE)

Personalize passenger experiences with modern In-flight entertainment tools. Adopt flexible IFE with simple deployment & management

## ABOVE THE WING

### ONBOARD SERVICE

Help flight crew improve customer service, boost productivity, increase in-flight sales. Give crew insight to passenger history & preferences

## BELOW THE WING

### MAINTENANCE

Maximize below-the-wing maintenance & operational efficiencies. Rugged devices. Create efficiency with digital forms, manuals and plans

## COCKPIT

### ELECTRONIC FLIGHT BAG

Help pilots maximize efficiencies on the ground and in the air. Replace flight bags, EFB devices, and laptops with thin, light professional devices.

## TERMINAL

### FLIGHT INFORMATION DISPLAYS

Ensure clear and up to date communication with your passengers, either in the terminal or in the Airline lounge

## TERMINAL

### QUEUE BUSTING

Connect with premium passengers and provide a first class service. Mitigate the waiting time for passengers in check in or lounge queues.

## TERMINAL

### CURB SIDE EXPERIENCE

Deliver best-in-class customer service to premium passengers. Use insight to the profile of passengers – history, preferences etc.

## AIRLINE OPERATIONS

### CREW SCHEDULING

Ensure crew are provided with all operational and flight details ahead of time on mobile devices. Provides access to passenger manifest, route details etc.



# RETAIL MOBILITY

## POINT OF SALE

### MOBILE POS (mPOS)

Reduce check-out wait times with “line busting” mobile cashiers who can scan barcodes and swipe credit cards on the tablet.



## CUSTOMER SERVICE

### ASSISTED SALES

Provide instant access to product information through associates’ devices. Give associates insight into customers’ purchase history and loyalty program data.



## STORE ROOM

### STORE OPERATIONS

Deliver real-time account and sales data that reps need to maintain brand appearance and keep shelves stocked.



## BACK OFFICE

### STORE OPERATIONS

Managers track and replenish inventory from in store. Increase store managers’ floor time and monitor store KPI’s in real time.



## SHOP FLOOR

### RETAIL EXECUTON

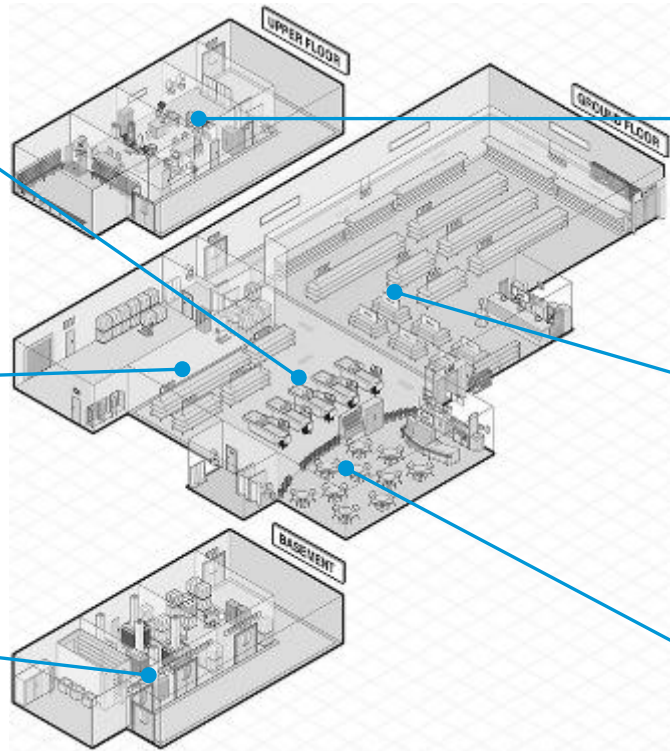
Grant seamless access to sales history, inventory levels, and warehouse availability. Enable “On the Go” communication and collaboration with LOBs.



## CUSTOMER REFRESHMENT

### F&B OUTLETS

Mobile devices can be used by servers to help capture customer orders and requests and feed real time to the kitchen and also for inventory management.



# RETAIL BANKING MOBILITY

## OPEN AREA

### ASSISTED SERVICE

Personalized engagement with the customer to review products and offerings to suit customers needs. Utilize touch screen capabilities.



## TELLER ZONE

### TELLER SERVICE

Tellers are freed up from cash handling and can focus more on selling activities. Integrated with a “360 Pop-up on Arrival” display tailored to the customers profile



## CUSTOMER SERVICE ZONE

### PERSONALISED SERVICE

1 to 1 personal experience for more specific banking needs. Leverage Mobile devices to display customers financial profile – ensure informed sell



## BRANCH WALLS

### DIGITAL SIGNAGE

Communicate directly and dynamically with customers. Update on latest offers, exchange rates or general communications.



## ENTRANCE LOBBY

### SELF SERVICE

Customer swiping their credit card at a self service kiosk can then be appropriately dealt with based on identified customer type, profile and transaction type.



## WELCOME DESK

### QUEUE BUSTING

“Meeter & Greeter” approach the customer using a tablet device capturing details from Bank Card and then handled accordingly. High net worth prioritized.





# HEALTHCARE MOBILITY

## OPERATING ROOM

### OPERATING THEATRE

Utilize tablets that can be displayed or affixed in the OR to give surgeons access to data, manuals or input to other areas of a hospital inc. real time notes.

## WARD

### CLINICAN SCHEDULING

Providing Clinicians with a mobile devices allows them to roam more freely around a ward, always ensuring they have real time patient data and schedules

## PATIENT ARRIVAL

### WARD MANAGEMENT

In A&E, mobile devices can be used to capture patient data on arrival. This data is then cascaded throughout the treatment process and follows the patient.

## BEDSIDE

### BED SIDE SYSTEMS

Personalize patient experiences with modern bedside entertainment tools. Device can be used to communicate out as well as receive messages.

## TREATMENT ENGAGEMENT

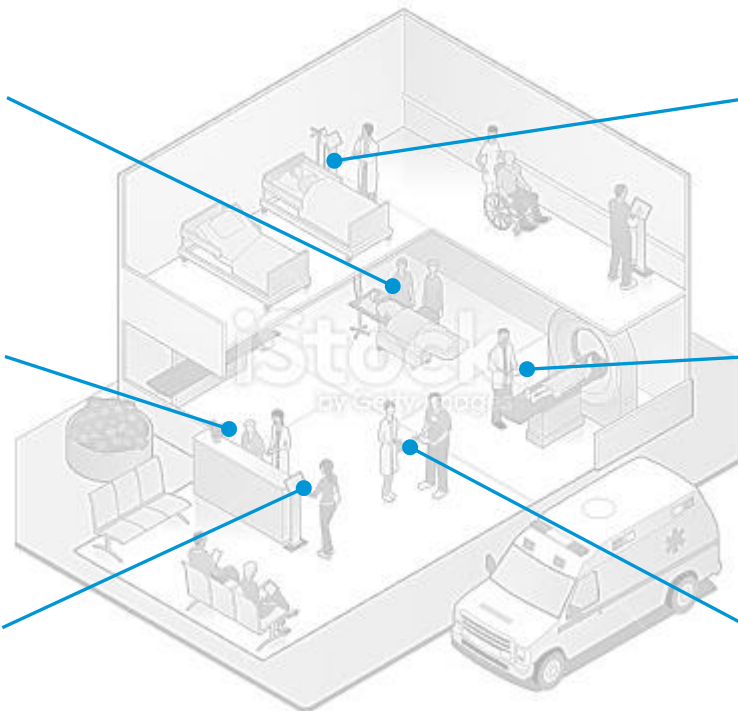
### MEDICAL RECORDS

Utilising a tablet, a care giver can share with the patient on a more personal basis their recovery program, ailment notes etc. at a bedside level

## OUTPATIENT

### AFTER CARE

Clinicians can use real time patient medical records (PACS) to call up data on recovery periods, medication and schedule further visits.



# Mobility – Next Steps

HP & Its partners have lots of assets



## Workshop

- On-site 1-2 day event
- Build agenda with account team
- Mobility presentations from CxO to tech people
- Discuss technical details of HP capability



## Proof of Concept

- Functional to Performance testing
- Help the customer to refine their requirements
- Full access is given to customers on the Mobility solutions

## Mobility components

You build it – You run it  
HP Partner eco-system  
Supported by HP

## HP Mobility Services

We build it – You run it  
HP Technology services  
Supported by partners

## HP Managed Mobility Services

We build it – We run it  
HP Enterprise Services





# Merci

